

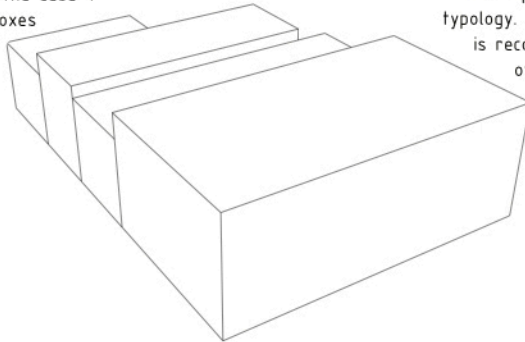


CASA



← Blob vs Box  
Rem Koolhaas, *Content*

Rem Koolhaas in the book *Content* uses this image to reflect about the current fight between the Euclidean geometry (Box) and the complex shapes of the Topologic geometry used from the digital vanguard (Blob). In the built architecture Boxes are still cheaper than the Blobs. The intention of the Casa 4 project is to use the Blobs and Boxes dialog as a concrete testimony of this important issue of the contemporary architecture.

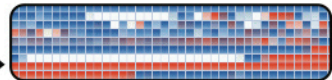


A. SUM OF BOXES (BOX+BOX...)

Contrada Ciancio  
Marsala



Defrag process



In the Marsala countryside each new family house is a Box. The city grows in this way : Box+Box...The difference is only the color and the texture of the plaster on the facade. The Casa 4 make a reinterpretation of this traditional typology. The unit (1.the individuality) is recognized and associated with others units (4.the family) depending on the surface needed in a process of defragmentation



←view\_2 solarium

Magritte, human condition ▶



←view\_1 solarium

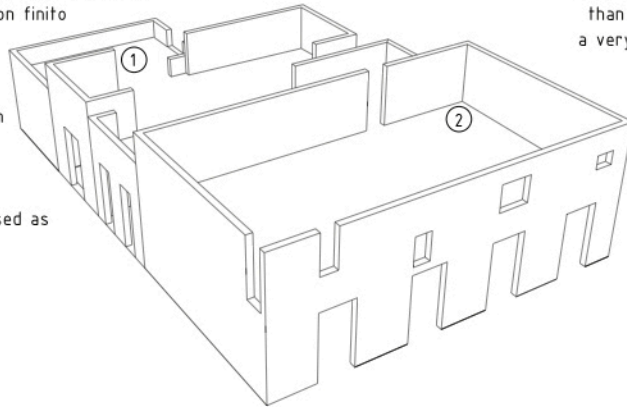
"painting the landscape" ▶



The solarium is a typical element of the mediterranean architecture that in this project helps to give the idea of non finito (not finished).

The floor was realized in gres 15x15 of 4 different colors remembering the earth colors of the fields around the Casa 4 changing during the 4 seasons.

The traditional material is used as chromatic pixel.



Each window to the landscape is very different than the others producing a very personal and unique relation with the landscape.

## B. CUT THE BOXES



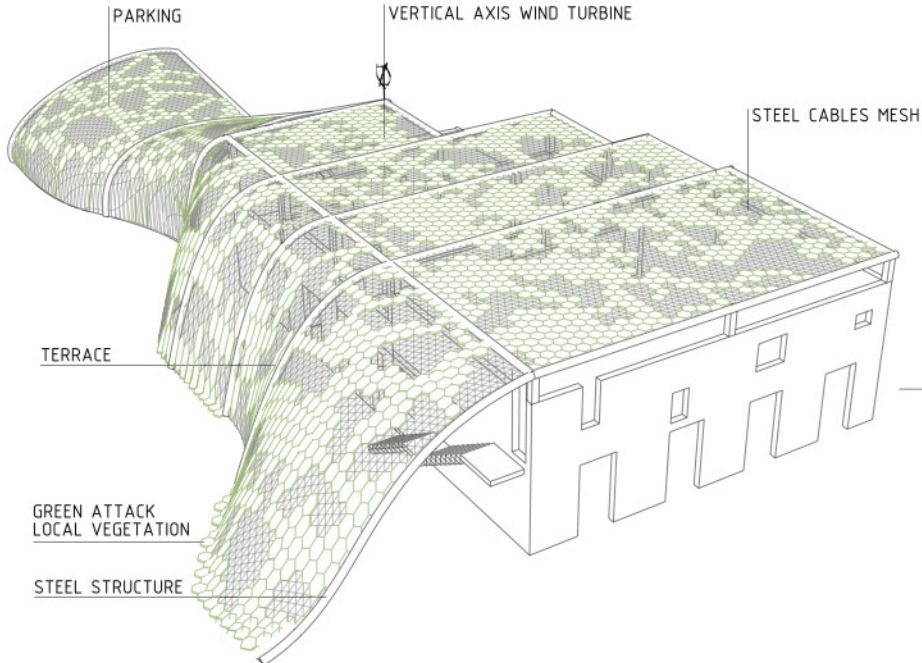
Cantine Dominus  
Herzog & De Meuron

Parco d'Orleans, Palermo,  
Photovoltaic/Green pergola



The pergola has a double function: to produce shadow and to collect energy with the installation of a wind mill and solar panels. The local green is integrated in the pergola with the "Green Attack": an hexagonal green element designed by Stardust\* and BuresInnova. The steel structure is an ephemeral roof that can change and grow outside the Casa 4 limits. Is a Blob with different functions born from a plan: the ideal trace of a possible new floor.

The openings of the ground floor on the landscape side are doors for all the bedrooms. Each guest has a direct relation with the outside and the landscape. The glass surface act as a mirror that allows the landscape to enter inside the Casa 4.



C. ADD THE BLOB (THE PERGOLA)





